

**Catalog No. 11216-040 1 mg**

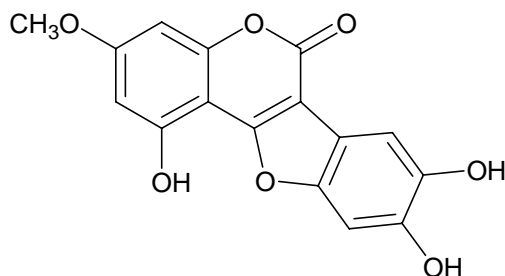
PRODUCT: Wedelolactone  
7-Methoxy-5,11,12-trihydroxycoumestan

CAS NO: 524-12-9

CATALOG NO.: 11216-040

SIZE: 1 mg

STRUCTURE:



PHYSICAL APPEARANCE: Yellow-green solid

MOLECULAR FORMULA: C<sub>16</sub>H<sub>10</sub>O<sub>7</sub>

MOLECULAR WEIGHT: 314.3

PURITY: 98%

SOLUBILITY: Soluble in DMSO (25 mg/mL)

STORAGE: Store, as supplied, at -20°C for up to 1 year. Store solutions at -20°C for up to 3 months.

APPLICATION NOTES: Wedelolactone is a naturally occurring furanocoumarin isolated from *Eclipta prostrata*, an herbal medicine used to treat septic shock in traditional Chinese medicine. It inhibits the I $\kappa$ B kinase (IKK) complex and suppresses LPS-induced caspase-11 expression in LPS-treated BALB 3T3 cells (IC<sub>50</sub> = 35  $\mu$ M).<sup>1</sup> The product is not sterile.

REFERENCES: 1. M.Kobori *et al. Cell Death Differ.* 2004 11 123

The pharmacological and toxicological properties of this product have not been fully investigated. Exercise caution in use and handling. This product must not be used in humans.